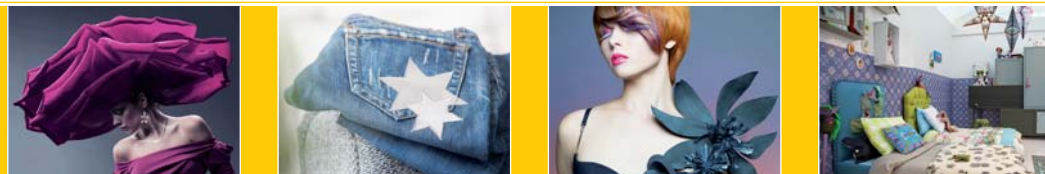




BEFORE YOU START PROCESSING THE INTERLINING, WE RECOMMEND MAKING AN IRONING SAMPLE TO CHECK HAND FEEL AND BOND STRENGTH. AFTER IRONING, LAY THE FUSED PARTS FLAT AND ALLOW TO COOL FOR 20 TO 30 MINUTES.

You will find more detailed processing instructions for our products on our homepage and in the special information brochures.



Freudenberg Interlining SE & Co. KG  
Vilene Interlinings  
Rosemount Estate, Elland, HX5 0EE

Tel. +49-6201-80 6700  
Fax +49-6201-88 2978



# THE CREATIVE RANGE

ALL VLIESELINE/VILENE PRODUCTS AT A GLANCE // BROCHURE



## TEAR-AWAY STABILIZERS

STITCH-N-TEAR  
FUSE-N-TEAR  
FILMOPLAST H 54

3



## WATER SOLUBLE STABILIZERS

SOLUFLEECE  
SOLUFIX

6



## APPLIQUÉS

BONDAWEB®

8



## CREATIVE WORKS

BONDAWEB® T6, T10, T25 // PAINTED BONDAWEB®  
PERMANENT CRASHING WITH SOLUFLEECE AND BONDAWEB®  
// S 80 // S 133  
S 320 // S 520 // DECOVIL I // DECOVIL I LIGHT  
LAMIFIX (MATT) // QUICKSCREEN (TRIANGLE)  
QUILTER'S GRID // CS 800

9



## CREATIVE RANGE

PRODUCT OVERVIEW

18



WE RECOMMEND PERFORMING APPLICATION TESTS BEFORE PROCESSING THE PRODUCT.

### STICKVLIES

WIDTH: 90 cm // COLOUR:

### STITCH-N-TEAR

### APPLICATION:

Easy to tear and dimensionally stable nonwoven. Suitable as backing for embroideries and appliqués. Prevents stretching of the fabric. As sewing aid for individual designing, for transferring topstitch work and patchwork.

### FABRICS:

All fabrics



### PROCESSING / CARE

To prevent distortion at EMBROIDERIES attach a piece of Stitch-n-Tear slightly larger than the hoop to the wrong side of the fabric before stitching. Then simply tear off the excess Stitch-n-Tear, the lines of topstitching serve as a perforation line.

For PATCHWORK and QUILTING either draw or trace the pattern on Stitch-n-Tear, attach it to the garment and sew the motif. Finally tear off the remaining Stitch-n-Tear.

TIP: Stitch-n-Tear can also be used for freehand embroidery and thread painting without a hoop. Place it underneath the fabric and tack in place.

# TEAR-AWAY STABILIZERS

FUSE-N-TEAR

4



WE RECOMMEND PERFORMING APPLICATION TESTS BEFORE PROCESSING THE PRODUCT.

<b>FIXIER-STICKVLIES</b>	WIDTH: 90 cm // COLOUR: <input type="checkbox"/> <input checked="" type="checkbox"/>
<b>APPLICATION:</b>	Fusible nonwoven which can be removed without leaving any residue. Especially suitable for embroideries onto stretchable fabrics. Fuse-n-Tear stabilizes the fabric and offers perfect embroideries without distortion. Supports creative work as a template and stabilizes fabrics to be PRINTED IN AN INK-JET PRINTER.
<b>FABRICS:</b>	All fabrics, especially suitable for stretchable fabrics, e.g. jerseys or elastic fabrics.
<b>PROCESSING:</b>	Iron on dry, easy to tear and completely removable 5 sec.

## PROCESSING / CARE

**FREEHAND EMBROIDERY and THREAD PAINTING:** Attach Fuse-n-Tear to the garment and sew the motif, then tear off.

Ideal sewing aid for **PATCHWORKING, STITCHING and QUILTS:** Draw the pattern on Fuse-n-Tear and attach it to handicrafts item. Sew the motif and tear off Fuse-n-Tear. Fuse-n-Tear can be removed without residue and used multiple times. Use it like **FREEZER PAPER**.

Fabrics can be stabilized with Fuse-n-Tear to be **PRINTED IN AN INK-JET PRINTER:**

1. Trim fabric to suitable size (e.g. DIN A4), iron Fuse-n-Tear on the back side and print ideally with waterproof print colours. Selection, motif and design is absolutely unlimited.
2. After printing Fuse-n-Tear can be completely torn off. Printed fabric is to be finished as desired, such as in quilts, place mats, bags, etc.

# TEAR-AWAY STABILIZERS

FILMOPLAST H 54

5



WE RECOMMEND PERFORMING APPLICATION TESTS BEFORE PROCESSING THE PRODUCT.

<b>FILMOPLAST H 54</b>	WIDTH: 54,5 cm // COLOUR: <input type="checkbox"/> <input checked="" type="checkbox"/>
<b>APPLICATION:</b>	Self-adhesive Filmoplast for machine embroidery, to frame embroideries and as backing paper for the making of collages. Especially suitable for elastic fabrics like jersey, piqué etc. and small pieces, e.g. handkerchiefs, cuffs, pockets and many more. Allows finished garments to be embroidered, such as blouses or polo shirts.
<b>FABRICS:</b>	All fabrics
<b>PROCESSING:</b>	Self-adhesive and tear off



## PROCESSING / CARE

1. Insert Filmoplast into the embroidery hoop with the backing paper on top.
2. Carefully score the backing paper (slightly more than you need for the embroidery motif), taking care not to damage the nonwoven.
3. Remove the scratch area. Position the fabric on the self-adhesive Filmoplast and gently sweep it flat.
4. Filmoplast can easily be removed without residue.

Distortion free embroidery now becomes child's play.

© Christophorus Verlag GmbH & Co. KG  
Freiburg 2013



WE RECOMMEND PERFORMING APPLICATION TESTS BEFORE PROCESSING THE PRODUCT.

WE RECOMMEND PERFORMING APPLICATION TESTS BEFORE PROCESSING THE PRODUCT.

**SOLUVLIES** WIDTH: 90 cm // PRE-PACK: 90 cm x 1,5 m // COLOUR:

**APPLICATION:** Water soluble embroidery backing for all machine embroideries and new creative works like crashing or "Crazy-Technique".

**FABRICS:** Almost all fabrics and textiles (wool etc.) that are washable.

**PROCESSING:** Wash out in cold water – do not tear off!

**SOLUFLEECE** **SOLUFIX** WIDTH: 45 cm // COLOUR:

**APPLICATION:** Water soluble and self-adhesive embroidery stabilizer (Solufix = Solufleece with water soluble adherend), no adhesive spray necessary; for all machine embroideries, new creative techniques and ideal sewing aid for mini-quilts. Solufix allows more precise and neater working than with adhesive sprays.

**FABRICS:** Almost all washable fabrics and textiles (wool etc.), particularly suitable for elastic fabrics like jersey.

**PROCESSING:** Wash out in lukewarm water – do not tear off! DO NOT IRON!



## PROCESSING / CARE

Solufleece is an excellent embroidery stabilizer for all techniques. It dissolves completely even in lukewarm water. The special characteristics enable embroideries on very fine and transparent fabrics or without a fabric when embroidered directly on the Solufleece.

1. Place your fabrics, threads or knitting yarns randomly on the Solufleece.
2. Position another layer of Solufleece on top and tack it with pins.
3. Then stitch all layers together with a sewing machine either criss-cross or in a grid.
4. Finally wash away Solufleece – done.

## PROCESSING / CARE

Solufix is a self-adhesive, water soluble embroidery stabilizer within the Vlieseline®/Vilene® range. Use it for embroidery on jersey, silk and many more.

1. Use Solufix as the base for the CRAZY-Technique. The desired and individual design sticks on Solufix and can be processed without any problems.
2. Place a layer of Solufleece on top and stitch all layers together – criss-cross or in a grid.
3. Wash away Solufix and Solufleece in lukewarm water – done.

By the way, patterns can easily be printed on Solufix (INK-JET PRINTER) and therefore it is perfectly suitable for the use as a embroidery or quilt template.



Shirt with painted Bondaweb®

WE RECOMMEND PERFORMING APPLICATION TESTS BEFORE PROCESSING THE PRODUCT.

WE RECOMMEND PERFORMING APPLICATION TESTS BEFORE PROCESSING THE PRODUCT.

## VLIESOFIX®

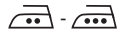
WIDTH: 30 cm, 90 cm, Display 45 cm // PRE-PACK: 17 cm x 1 m  
// COLOUR:  transparent

APPLICATION: Iron on, adhesive web, for appliqués, handicrafts, repairs and so on.

FABRICS: For all fabrics, felt, bast, cardboard, wood, and also leather at low temperature

PROCESSING: DOMESTIC HAND IRON

1. step: Iron on dry, glide iron slowly for 5 sec., let it cool down.
2. step: Press on firmly, step by step, for 10 sec. using a damp cloth.



## BONDAWEB®

## VLIESOFIX®

T6, T10, T25

COLOUR:  transparent

APPLICATION:

Two-sided iron-on adhesive medium, cut in tapes in 6, 10 and 25 mm width. Diagonal stripes, belt loops and many more can be ironed on.

MEASUREMENT:

6, 10, 25 mm x each 5 m

PROCESSING:

DOMESTIC HAND IRON

1. step: Iron on dry, glide iron slowly for 5 sec., let it cool down.
2. step: Press on firmly, step by step, for 10 sec. using a damp cloth.

5 sec./10 sec.



## BONDAWEB®

T6, T10, T25



## PROCESSING / CARE

### GREETING CARDS / DECOUPAGE:

Fabrics are bonded together simply by ironing. Ideal for imaginative appliqués and textile craft works of all shapes and colours as well as napkin technique. For this iron Bondaweb® on the back side of a paper napkins upper layer, cut out motif exactly, peel off backing paper and iron on with dry heat (setting wool).

### APPLIQUES:

1. Trace or draw the motif back-to-front onto the paper side of Bondaweb® and cut out roughly.
2. Place the rough side on the wrong side of the fabric and iron for 5 seconds with dry heat, .
3. Cut out the motif accurately and peel off the backing paper, then lay the motif coated side in the required position.
4. Cover with a damp cloth and iron on step by step for 10 seconds at a time, pressing down lightly, - .
5. Finally, serge the appliqué with zig-zag stitching (if needed place Stitch-n-Tear underneath).

## BEMALTES

VLIESOFIX®

WIDTH: 30 cm, 90 cm, Display 45 cm // PRE-PACK: 17 cm x 1 m  
// COLOUR:  transparent

PROCESSING:

Paint the adhesive side of Bondaweb® (e.g. with acrylic colours) and let it dry well. Place the adhesive side of Bondaweb® on the right side of the fabric and iron on from the paper side. Afterwards let everything cool down well. The painted Bondaweb® can also be ironed directly onto Vlieseline S 80.

Pull off the base paper of Bondaweb® carefully. If the adhesive tears off together with the paper, ironing was not intense enough or it has not cooled down sufficiently yet.

The fabric "painted" this way can now be used for creative handicraft projects, e.g. wall hangings, T-Shirts and postcards.

The painted side (= adhesive side) always has to be covered with baking paper when it is to be ironed afterwards.

## PAINTED

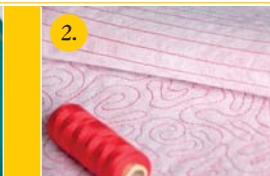
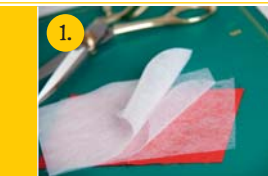
BONDAWEB®





WE RECOMMEND PERFORMING APPLICATION TESTS BEFORE PROCESSING THE PRODUCT.

WE RECOMMEND PERFORMING APPLICATION TESTS BEFORE PROCESSING THE PRODUCT.



**SOLUVLIES  
& VLIESOFIX®**

**SOLUFLEECE  
& BONDAWEB®**

### PROCESSING / CARE

Creative surface designs can be achieved easily with Solufleece and Bondaweb®.

1. Place two layers of Bondaweb® (without the paper) on the left side of the fabric and put another layer of Solufleece on top.
2. Afterwards sew all layers together in parallel lines e.g. in a distance of about 1 cm or criss-cross.
3. Place the steam iron on the highest setting and steam the Solufleece by letting the iron "hover" just above Solufleece – DO NOT IRON. The Solufleece will contract, gathering the fabric and generating the "smok" effect. The process is finished when the fabric stops shrinking. The size of the "bubbles" is determined by how the fabric is tucked in. A uniform "smok" effect is achieved by sewing with even sewing lines. Sewing the fabric in a criss-cross way or freely results in irregular "bubbles".
4. Repeat this process on each side 2 - 3 times.
5. Processed fabric has to be cooled down after crashing for at least 1 hour to let the adhesive layer cool down. After Solufleece should be washed out several times in lukewarm water – done.
6. Bondaweb® keeps this textile work in a permanent, crashed condition.
7. Depending on the finishing choose an interlining from the Vlieseline® range and iron it onto the backside, e.g. S 320 for bags, or G 785 for clothing.



**S 80**

APPLICATION:  
FABRICS:

WIDTH: 30 cm, 45 cm, 90 cm; as postcard: 15 x 10,5 cm, 10 pc./package // COLOUR:

Sew-in interlining; for postcards and creative works.  
Almost all fabrics



**S 133**

APPLICATION:  
FABRICS:

WIDTH: 30 cm, 45 cm, 90 cm // COLOUR:  ecru

Very firm and compact pelmet interlining for fabric bowls, peaks of caps, bottoms of bags, as well as for creative works.

Almost all fabrics





WE RECOMMEND PERFORMING APPLICATION TESTS BEFORE PROCESSING THE PRODUCT.

WE RECOMMEND PERFORMING APPLICATION TESTS BEFORE PROCESSING THE PRODUCT.

**S 320** WIDTH: 30 cm, 45 cm, 90 cm // COLOUR:   
 APPLICATION: Soft iron-on interlining for pelmets; for fabric bowls, bags, belts, hats, creative works etc.  
 FABRICS: Almost all fabrics  
 PROCESSING: Press on firmly, step by step with a damp cloth  
 15 sec. -



**DECOVIL I** WIDTH: 90 cm // COLOUR:  beige  
 APPLICATION: Iron-on interlining with a leather-like handle, dimensionally stable and resilient; ideal for the creation of handicrafts, bags, hats, belts and also for interior design.  
 FABRICS: Cotton fabrics, furnishing fabrics  
 PROCESSING: Press on firmly, step by step with a damp cloth  
 6 sec.



**S 520** WIDTH: 30 cm, 45 cm, 90 cm // COLOUR:   
 APPLICATION: Firm iron-on interlining for pelmets, for fabric bowls, bags, belts, hats, creative works etc.  
 FABRICS: Almost all fabrics  
 PROCESSING: Press on firmly, step by step with a damp cloth, handwash flat laid  
 15 sec. -



**DECOVIL I LIGHT** WIDTH: 90 cm // COLOUR:  beige  
 APPLICATION: Slightly lighter alternative to Decovil I. Ideal for many creative works like hats, belts, bags etc.; also for interior design.  
 FABRICS: Cotton fabrics, furnishing fabrics  
 PROCESSING: Press on firmly, step by step with a damp cloth  
 6 sec.



PROCESSING / CARE

PROCESSING / CARE

Vlieseline® / Vilene® S 320 is a softer, S 520 a firm iron-on interlining for pelmets. Both are the ideal interlining for bags, hats, belts, fabric bowls and creative work.

Decovil is an iron-on interlining with a leather-like hand feel, produced on the basis of a special technology. This product is not only tear resistant, but also dimensionally stable and easy to shape. Furthermore it is resilient, resistant to bending, punchable and the cutting edges do not fray. Thereby the fixed fabrics have a good hand feel and are very stable and durable. Decovil I Light is the lighter and softer alternative to Decovil I. Nevertheless, it has the same varying properties.



WE RECOMMEND PERFORMING APPLICATION TESTS BEFORE PROCESSING THE PRODUCT.

**LAMIFIX**

**LAMIFIX MATT**

WIDTH: 45 cm // COLOUR:  transparent

APPLICATION: Transparent, glossy or matt, fusible and wet cleanable film; for fabric bowls, toiletry bags, place mats, bags, as well as for textile craftwork.

FABRICS: Almost all fabrics



PROCESSING / CARE

Iron on dry on the glossy / matt side, cover with a dry cloth, first fuse smoothly, then press on firmly, step by step, for 8 sec.



Lamifix and Lamifix matt can be wiped with a damp cloth; DO NOT WASH!



WE RECOMMEND PERFORMING APPLICATION TESTS BEFORE PROCESSING THE PRODUCT.

**RASTERQUICK DREIECK**

**RASTERQUICK**

WIDTH: 90 cm // COLOUR:

APPLICATION: Patchwork interlining with blue printed-on grid in a 60° or 90° angle.

FABRICS: All fabrics

**QUICKSCREEN TRIANGLE**

**QUICKSCREEN SQUARE**



PROCESSING / CARE

When doing Patchwork, Quickscreen Triangle and Quickscreen Square serve as an orientation guide to sew diagonal patterns like rhombus, stars etc. Tack the interlining to the fabric with pins. It is later sewed onto the textile work.







WE RECOMMEND PERFORMING APPLICATION TESTS BEFORE PROCESSING THE PRODUCT.

**QUILTER'S  
GRID**

WIDTH: 112 cm // COLOUR:

APPLICATION: Fusible nonwoven for watercolor quilts with printed-on 1-inch-grid lines; brown and fine printed lines.

FABRICS: All fabrics



PROCESSING / CARE

Quilter's Grid is fused to the fabric by ironing it on and serves as an orientation guide for sewing quilts, thanks to its printed-on grid lines. It makes precise work and symmetrical patterns considerably easier to create.

Iron on dry with low pressure, step by step.

10 - 12 sec.



WE RECOMMEND PERFORMING APPLICATION TESTS BEFORE PROCESSING THE PRODUCT.

**CS 800**

WIDTH: 80 cm, 107 cm // COLOUR:

APPLICATION: Spunbond with unlimited possible uses, e.g. for experimental surface designs, for home decor and interior designs as well as painting.



PROCESSING / CARE

Vlieseline®/Vilene® CS 800 is a strong spunbond ideal to paint and for other creative works like textile envelopes, bags, templates, also for home decor and interior design. It is absolutely stable, tear resistant and does not fray. Appliqués with Bondaweb® on CS 800 are also possible.

CS 800 is ideal for sliding curtains/panel systems as well as for partitions. CS 800 is available in the colour white.



WE RECOMMEND PERFORMING APPLICATION TESTS BEFORE PROCESSING THE PRODUCT.

## TEAR-AWAY STABILIZERS

- STICKVLIES** WIDTH: 90 cm // COLOUR:  **STITCH-N-TEAR**  
 Suitable as backing for embroideries and appliqués with the sewing machine.

---

- FIXIER-STICKVLIES** WIDTH: 90 cm // COLOUR:   **FUSE-N-TEAR**  
 Fusible stabilizer for machine embroideries, especially on elastic fabrics. Stabilizes fabrics to be printed in an ink-jet printer. Use it like freezer paper.

---

- FILMOPLAST H 54** WIDTH: 54,5 cm // COLOUR:   
 Self-adhesive embroidery backing for machine embroideries, to frame embroideries and as backing paper for the making of collages.

## WATER SOLUBLE STABILIZERS

- SOLUVLIES** WIDTH: 90 cm // PRE-PACK: 90 cm x 1,5 m // COLOUR:  **SOLUFLEECE**  
 For all machine embroideries and new creative craft works like crashing or "Crazy-Technique".

---

- SOLUFIX** WIDTH: 45 cm // COLOUR:   
 Water soluble and self-adhesive, no spray necessary, for all machine embroideries, new creative techniques, ideal sewing aid for mini-quilts.

New

## APPLIQUÉS

- VLIESOFIX®** WIDTH: 30 cm, 90 cm, Display 45 cm // PRE-PACK: 17 cm x 1 m // COLOUR:  transparent **BONDAWEB®**  
 Iron on, adhesive web, for appliqués, handicrafts, repairs and so on.

## CREATIVE WORKS

- VLIESOFIX® T6, T10, T25** COLOUR:  transparent **BONDAWEB®**  
 Two-sided iron-on adhesive medium, cut in tapes in 6, 10 and 25 mm width. See above for additional measurements for creative works.

---

- S 80** WIDTH: 30 cm, 45 cm, 90 cm; as postcard: 15 x 10,5 cm, 10 pc./package // COLOUR:   
 Sew-in interlining; for postcards and creative works.

---

- S 133** WIDTH: 30 cm, 45 cm, 90 cm // COLOUR:  ecru  
 Very firm and compact fusible interlining; for peaks of caps, bottoms of bags etc.

---

- S 320** WIDTH: 30 cm, 45 cm, 90 cm // COLOUR:   
 Soft pelmet interlining, for fabric bowls, bags, belts etc.

---

- S 520** WIDTH: 30 cm, 45 cm, 90 cm // COLOUR:   
 Firm pelmet interlining, for fabric bowls, bags, belts, hats etc.

---

- DECOVIL I** WIDTH: 90 cm // COLOUR:  beige  
 Fusible interlining with leather-like handle, dimensionally stable and resilient.

---

- DECOVIL I LIGHT** WIDTH: 90 cm // COLOUR:  beige **New**  
 A lighter alternative to Decovil I.

---

- LAMIFIX LAMIFIX MATT** WIDTH: 45 cm // COLOUR:  transparent  
 Transparent, glossy or matt finish, fusible and wet cleanable film.

---

- RASTERQUICK DREIECK RASTERQUICK** WIDTH: 90 cm // COLOUR:  **QUICKSCREEN TRIANGLE QUICKSCREEN SQUARE**  
 Patchwork interlining with blue printed-on grid in a 60° or 90° angle.

---

- QUILTER'S GRID** WIDTH: 112 cm // COLOUR:   
 Fusible nonwoven for watercolor quilts with printed-on 1-inch-grid lines.

---

- CS 800** WIDTH: 80 cm, 107 cm // COLOUR:   
 Strong spunbond with unlimited possible uses.